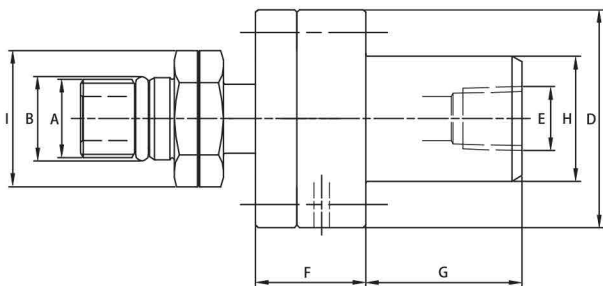


支架安装接头

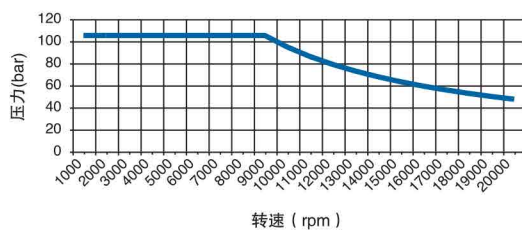
G10C



型号(不带唇形密封)	型号(带唇形密封)	A	B	D	E	F	G	H	I
G10C006018362	G10C006018382	5/8" - 18 LH	0.63	1.74	1/4" NPT	0.88	1.25	1.38	0.91
G10C006018363	G10C006018383	5/8" - 18 RH	0.63	1.74	1/4" NPT	0.88	1.25	1.38	0.91
G10C006018364	G10C006018384	3/8" - 24 LH	0.39	1.74	1/4" NPT	0.88	1.25	1.38	0.91
G10C006018365	G10C006018385	3/8" - 24 RH	0.39	1.74	1/4" NPT	0.88	1.25	1.38	0.91
G10C006018366	G10C006018386	1/2" - 20 LH	0.51	1.74	1/4" NPT	0.88	1.25	1.38	0.91
G10C006018367	G10C006018387	1/2" - 20 RH	0.51	1.74	1/4" NPT	0.88	1.25	1.38	0.91
G10C006018368	G10C006018388	M16" X 1.5 LH	0.71	1.74	1/4" NPT	0.88	1.25	1.38	0.91
G10C006018369	G10C006018389	M16" X 1.5 RH	0.71	1.74	1/4" NPT	0.88	1.25	1.38	0.91
G10C006018370	G10C006018390	M10" X 1 LH	0.43	1.74	1/4" NPT	0.88	1.25	1.38	0.91
G10C006018371	G10C006018391	M10" X 1 RH	0.43	1.74	1/4" NPT	0.88	1.25	1.38	0.91
G10C006018372	G10C006018392	M12" X 1.25 LH	0.51	1.74	1/4" NPT	0.88	1.25	1.38	0.91
G10C006018373	G10C006018393	M12" X 1.25 RH	0.51	1.74	1/4" NPT	0.88	1.25	1.38	0.91

型号	压力 (bar)	温度 (°C)	转速 (RPM)
G10C	105	70	20,000

G10C型旋转接头PV曲线



特点和优势

- ▶ 高压、无轴承的冷却液旋转接头
- ▶ 外部支架安装
- ▶ 转轴直接装于机床主轴端部
- ▶ 设计精密，结构紧凑，安装灵活
- ▶ 碳化钨密封面，耐磨耐热冲击
- ▶ 可选择唇形密封为主轴额外保护